








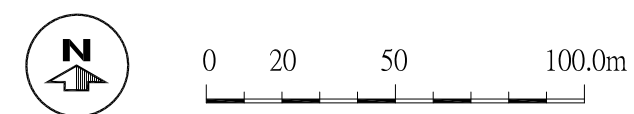




圖例 LEGENDA :

-  規劃範圍  
LIMITE DE INTERVENÇÃO
-  綠化休憩區  
ZONA VERDE E DE LAZER
-  行車道路  
VIA DE CIRCULAÇÃO RODOVIÁRIA
-  行人道  
PASSEIO PEDONAL
-  行人天橋  
PASSAGEM PEDONAL SUPERIOR
-  行人隧道  
PASSAGEM INFERIOR PARA PEÕES
-  車輛出入口通道  
ACESSO DE ENTRADA E SAÍDA PARA VEÍCULOS AUTOMÓVEIS
-  公共停車場  
AUTO-SILO PÚBLICO
-  保留現有之樹木  
MANUTENÇÃO DAS ÁRVORES EXISTENTES
-  巴士總站  
TERMINAL DE AUTOCARRO
-  巴士站  
PARAGEM DE AUTOCARROS
-  上落客/貨區  
ZONA DE TOMADA E LARGADA PARA PASSAGEIROS E MERCADORIAS



土地工務運輸局 DSSOPT	城市規劃廳 DPU - DEPARTAMENTO DE PLANEAMENTO URBANÍSTICO	
項目 Proj:	氹仔北區都市化整治計劃修訂 ACTUALIZAÇÃO PLANO DE ORDENAMENTO URBANÍSTICO - ZONA NORTE DA TAIPA	04
建議書編號: 580/DPU/2013	圖名 Des.:	
廳長:	道路網示意圖	
編製技術員:	PLANTA DE REDE RODOVIÁRIA	
日期: 08-11-2013		
比例: 1:2000		